

Team Defence SME Showcase

25th January 2024

12:00-13:15



Arke Ltd
TDI
25th Jan 2024

- Based in Wiltshire, around 60 employees
- Background in helping the Ministry of Defence with evidence based decision making and cost modelling.
- Expanded our capability to include sustainability and specifically carbon-based analysis.
- Deepened our modelling capability to include systems dynamics.

- Bring out the awareness of our newer capabilities
- Look for potential collaborators on future projects – specifically where we can collaborate and learn from each other in the sustainability and modelling spaces
- Share some LfE we have from work we've done
- Share challenges we have come across and understand whether others have had the same/how they have been overcome

DE&S Net Zero

- Reviewing 17 DM sites to understand how they can introduce Natural Capital Assets, Energy Saving Measures and Supporting Infrastructure
- Work will review whole life cost
- Work will review whole life carbon

Carbon Flow

- Whole life cost / whole life carbon tool which we are progressively developing, which focuses on equipment rather than infrastructure.
- Includes a particular module around the carbon cost of shipbuilding, looking at various materials and techniques as well as the impact of overheads.

Successes

- Comprehensive tool to predict the Whole Life Carbon of Products
- Understand the trade-offs in the space a lot better now
- Multi-company team
- New and Novel Area

Opportunities

- Influence key stakeholders in understanding the importance of sustainability and net zero
- Comprehensive decision-making system trade offs
- New and Novel Area

- Project – Still Frame Images
 - Futures Lab
 - High level assessment of different architectures & tech to enable still frame images to for Naval C2, in relation to NSN
 - Used a causal map to understand problem space, build consensus between stakeholders and situate interventions within the system
 - Output: Form a set of prioritised recommendations for future C2 network interventions
 - E.g is sending lots of images to the bridge better?
- Capability
 - Enables decision making based on the reality of how real-world systems behave
 - Feedback loops and time delays drive non-obvious behaviours in real world systems
 - System Dynamics allows us to provide a way to articulate, quantify and model these systems – using causal maps and stock and flow simulations to identify bottlenecks and drivers within the system
 - Traditional Examples of SD include: Logistics and Supply Chain problems

- Successes
 - Clear picture of non-obvious problems in a way that is accessible to all
 - SD has been used to successfully model supply chain network and C2 systems
 - SCALE is a highly reuseable and use-friendly logistics model with proven track record
- Opportunities
 - Having Subject Matter Experts in each specific areas to create a rich picture of the problem space
 - Data for populating and validating models



Innovation & Design Engineering

Ian.Hobson@ide-systems.com



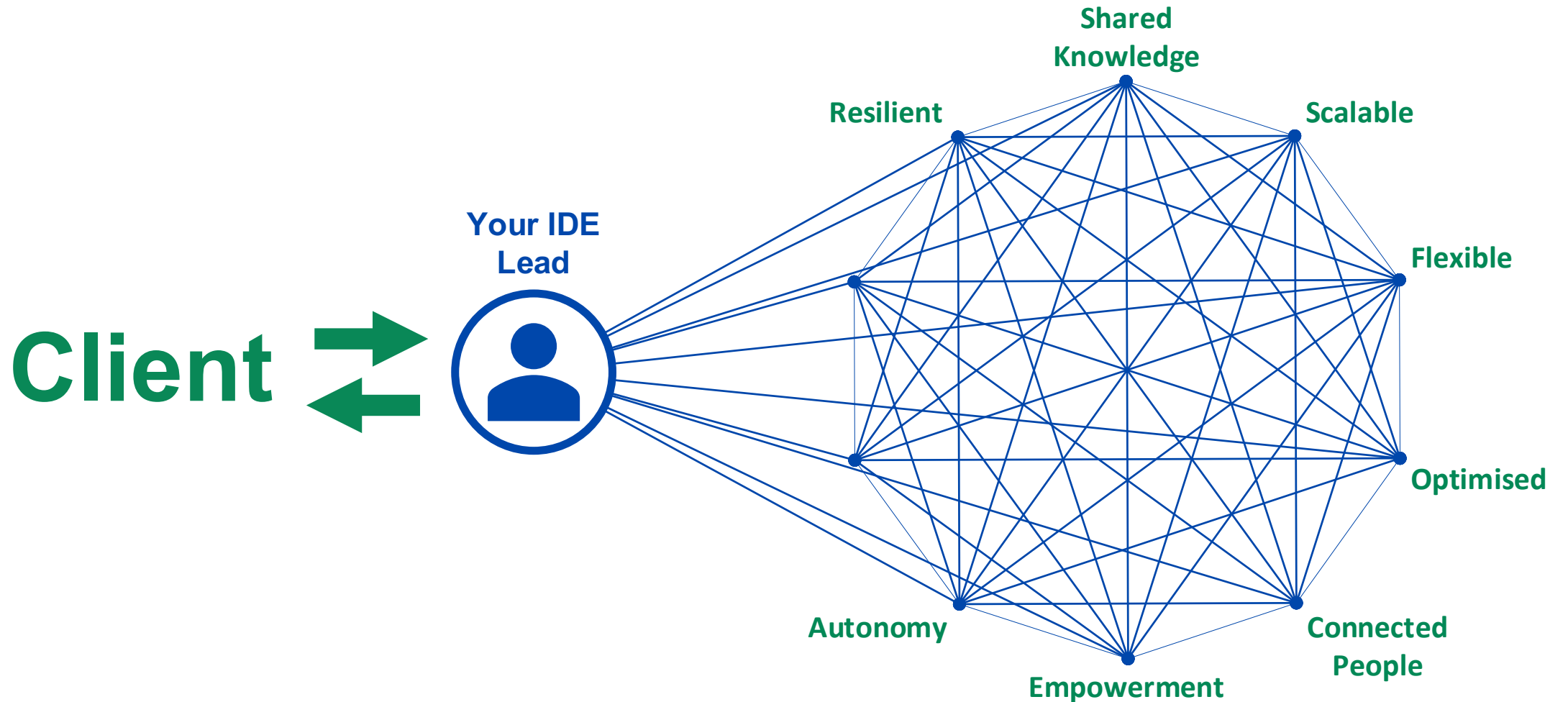
Our Mission

**OUR MISSION IS TO EMPOWER CLIENTS IN
TRANSITIONING TO A WORK PACKAGE DELIVERY
MODEL**

**OUR VISION IS TO RELEASE THE POWER OF THE
UK ENGINEERING SKILLS POOL TO REALISE OUR
CLIENTS' NEEDS**



How we work





Why IDE?

Capability

- Our team brings knowledge, skills and experience acquired across a myriad of domains, platforms, and systems.
- As suitably qualified & experienced personnel (SQEP), the IDE team are expert practitioners in Systems Thinking, Systems Engineering and Systems Safety Engineering.
- Additionally, the IDE team have particular expertise in Engineering Management, including Systems Engineering, and Engineering Planning.

Systems Thinking

- Provision of expertise in multi-methodological Systems Thinking approaches for problem structuring
- Application of Systems Thinking approaches in design modes to provide problem dissolution

Systems Engineering

- Provision of expertise across the Systems Lifecycle from concept through to disposal
- Focus on model-based approaches
- Integration leadership with discipline design teams to ensure adoption in the wider organisation

Systems Safety Engineering

- We provide expert practitioners who have first-hand experience of recognised safety-related standards. These include but are not limited to:
 - MIL-STD-882E, Department of Defense (DoD) Standard Practice System Safety;
 - UK MoD Defence Standard (Def Stan) 00-056 Safety Management Requirements for Defence Systems;
 - IEC 61508:2010, Functional safety of electrical/electronic/programmable electronic safety-related systems;
 - ISO 26262:2011 Road vehicles - Functional safety.

EMBRACING COMPLEXITY

**EXPLORING, LEVERAGING AND EXCHANGING DATA,
KNOWLEDGE AND SYSTEMS, WITH CONFIDENCE.**

TEAM DEFENCE INFORMATION SHOWCASE JAN 24

Ali Nicholl, Founding Team
ali.nicholl@iotics.com

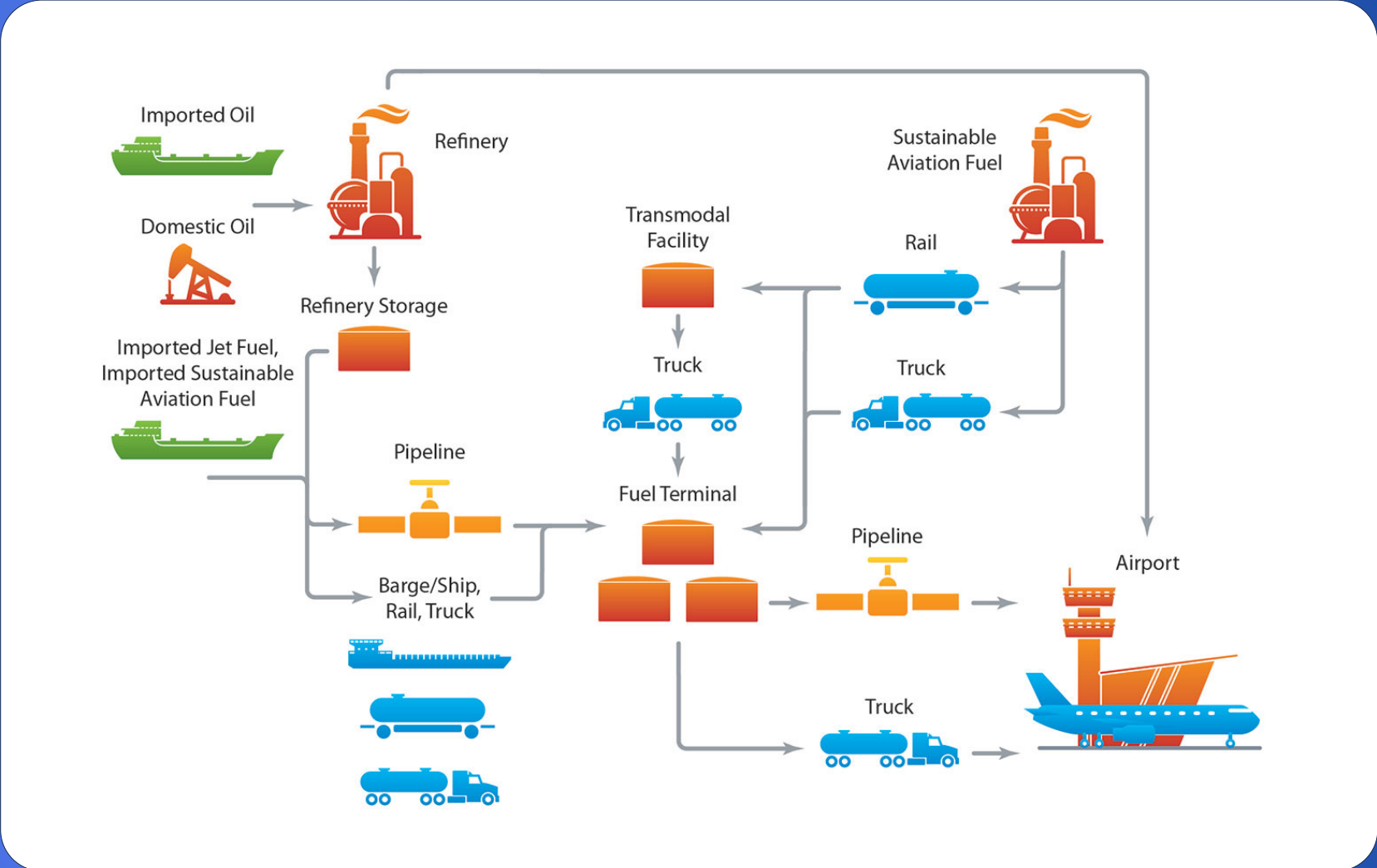
COOPERATION ≠ COLLABORATION



'I NEED YOU TO BREAK OUT
OF TRADITIONAL DOMAIN
SILOS AND WORK IN
PARTNERSHIP TO DELIVER
INTEGRATED SOLUTIONS
ACROSS THE SUPPLIER BASE.'

General Sir Jim Hockenhull, Strategic Command
Speaking to industry DSEI 2023

-  Oil Production
-  Refineries
-  Production Facilities
-  Pipeline & Substations
-  Storage (Domestic)
-  Storage (International)
-  Harbour
-  Shipping
-  Trans-modal Logistics
-  Operation

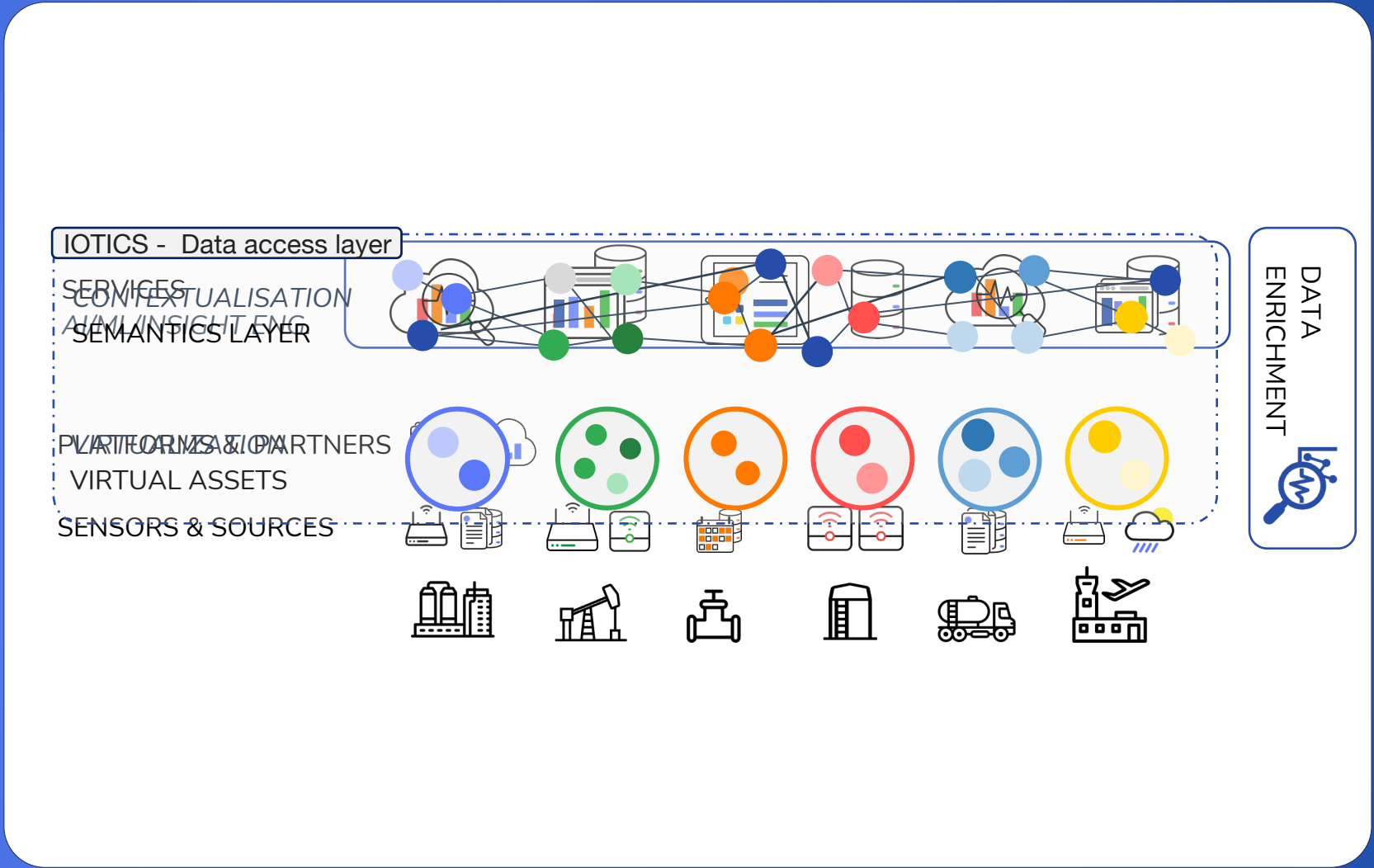




‘ONE OF THE BIGGEST CHALLENGES FOR THE DEFENCE INDUSTRY IS HOW DO YOU ACTUALLY SHARE DATA INTELLECTUAL PROPERTY WITH SOMEBODY THAT IS SIMULTANEOUSLY YOUR PARTNER AND YOUR COMPETITOR.’

Louise Donaghey, Services Programmes Director,
Rolls-Royce

-  Oil Production
-  Refineries
-  Production Facilities
-  Pipeline & Substations
-  Storage (Domestic)
-  Storage (International)
-  Harbour
-  Shipping
-  Trans-modal Logistics
-  Operation



Virtualise assets, data and systems while ensuring access, governance and sharing are federated.

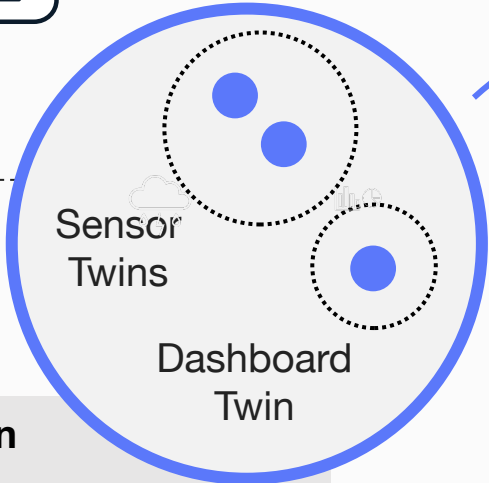
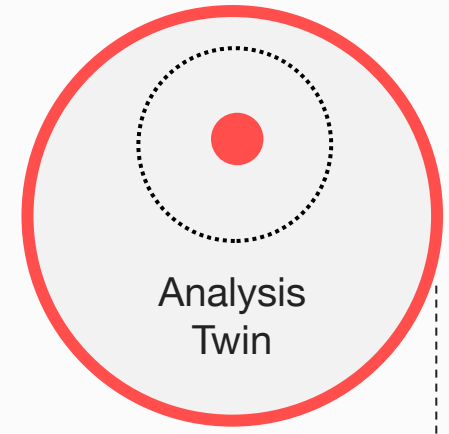
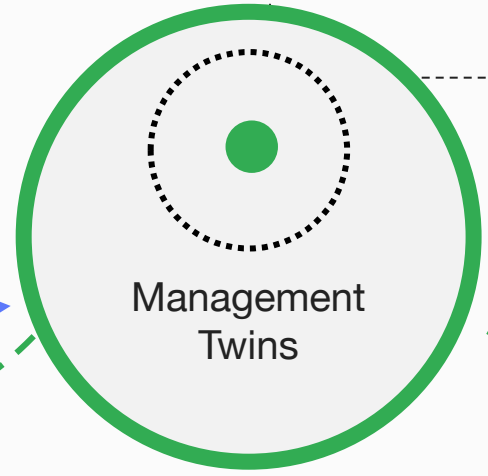
Virtualisation
Within the data access layer streaming information can be surfaced from multiple sources without exposing the underlying systems, data stores, or sources



Each organisation/data governor has their own IOTICSspace. Data remains stored in their own environments.

Data access layer

Each users has a single-entry point to access their version of data ecosystem



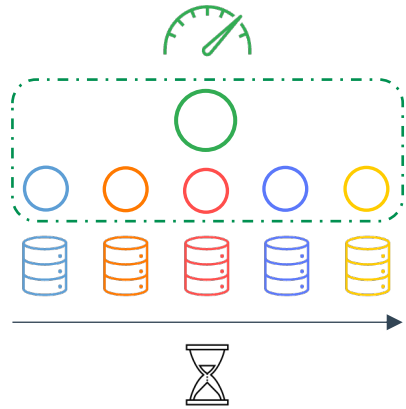
Fine Grained Security – data is controlled by owner with allow lists and filtering of data.

Data Enrichment
data can be further enhanced through users' analysis and AI/ML tools

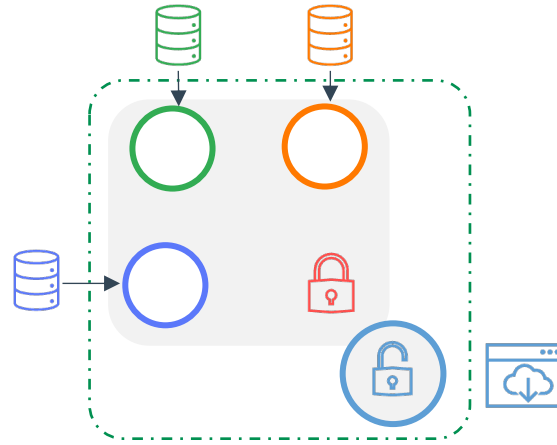


Self-determination
Data consumers and owners determine what, how, when and with whom they share information

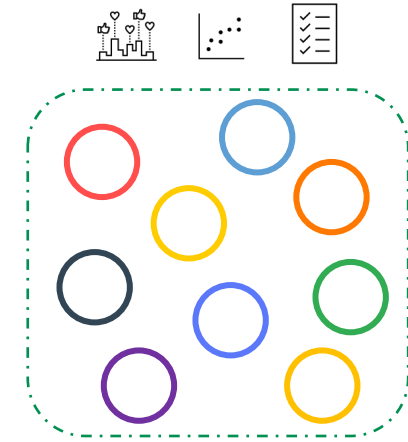
ADOPTION PATTERNS



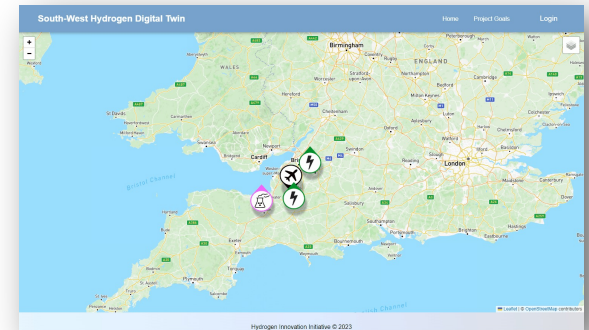
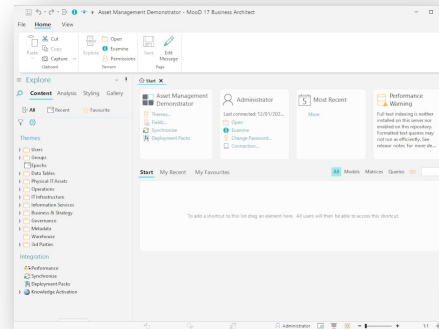
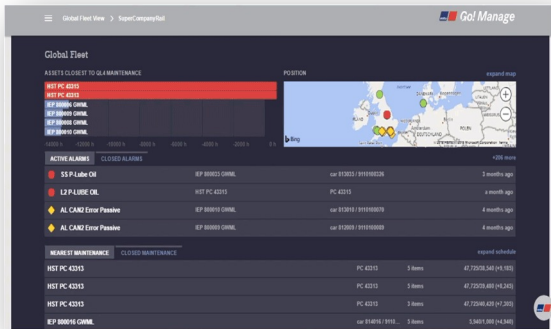
DIGITAL THREAD



MIXED TRUST



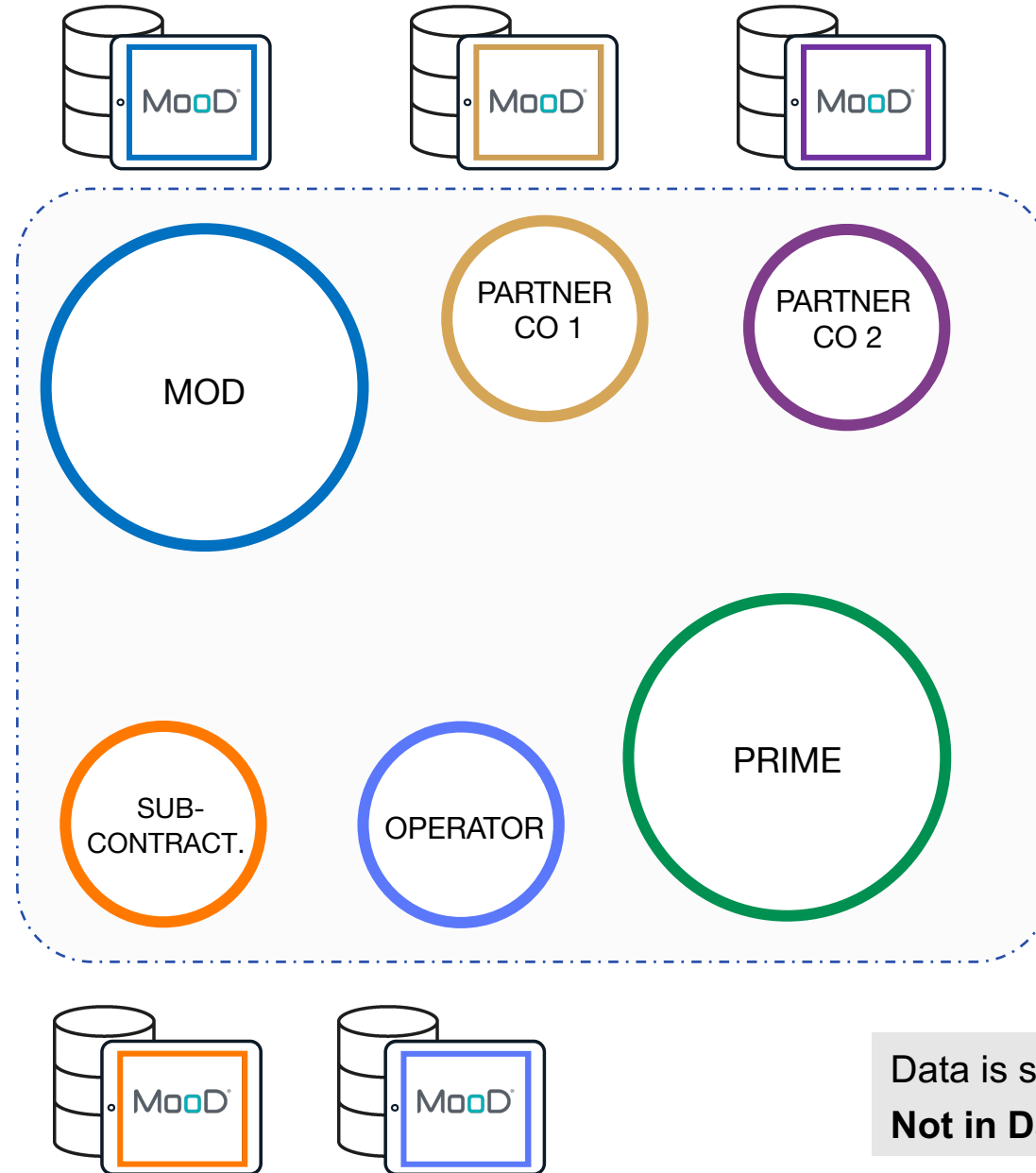
ECOSYSTEM OS



FEDERATING INSTANCES

CACI

MooD[®] software

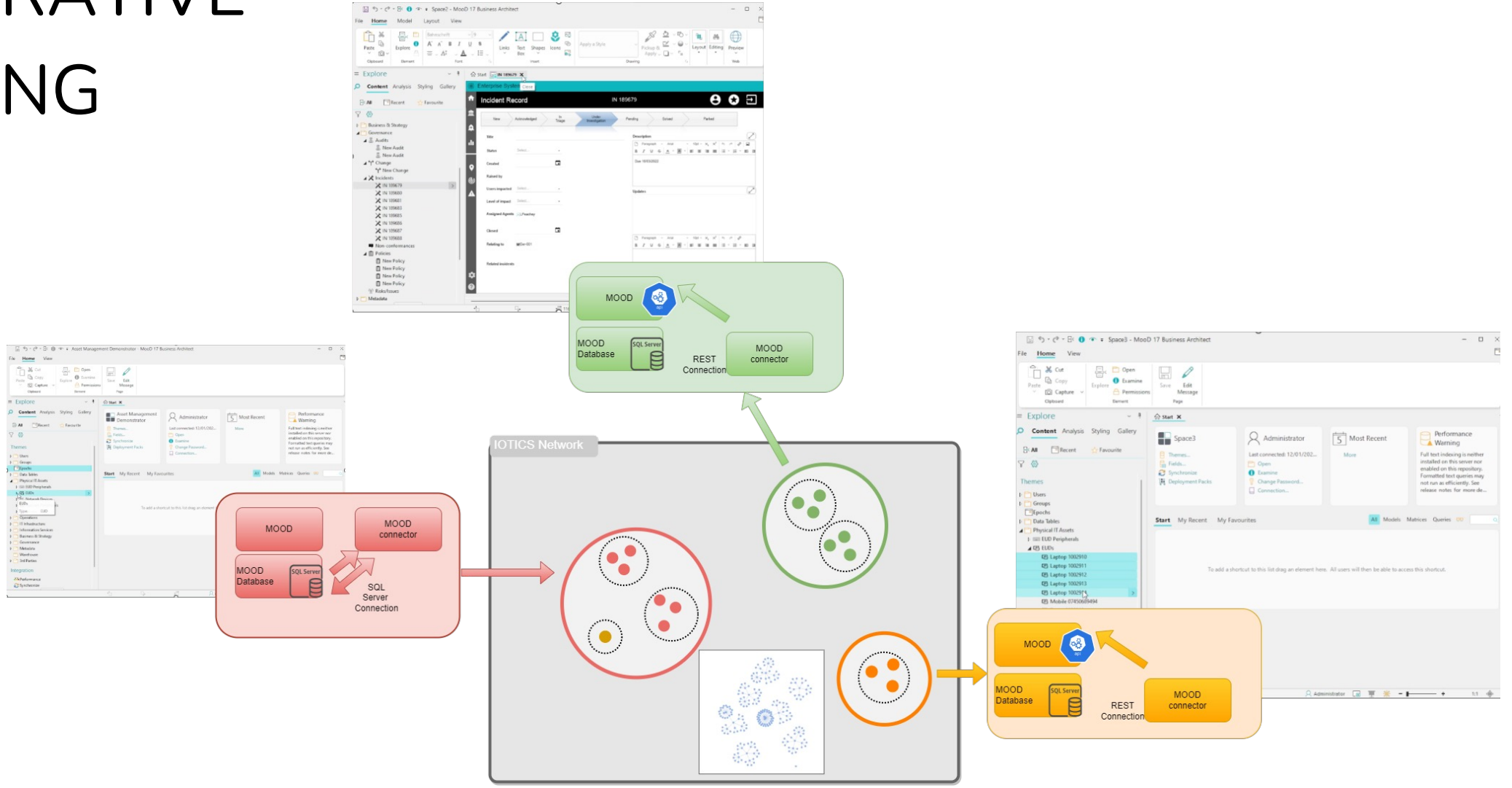


IOTICS

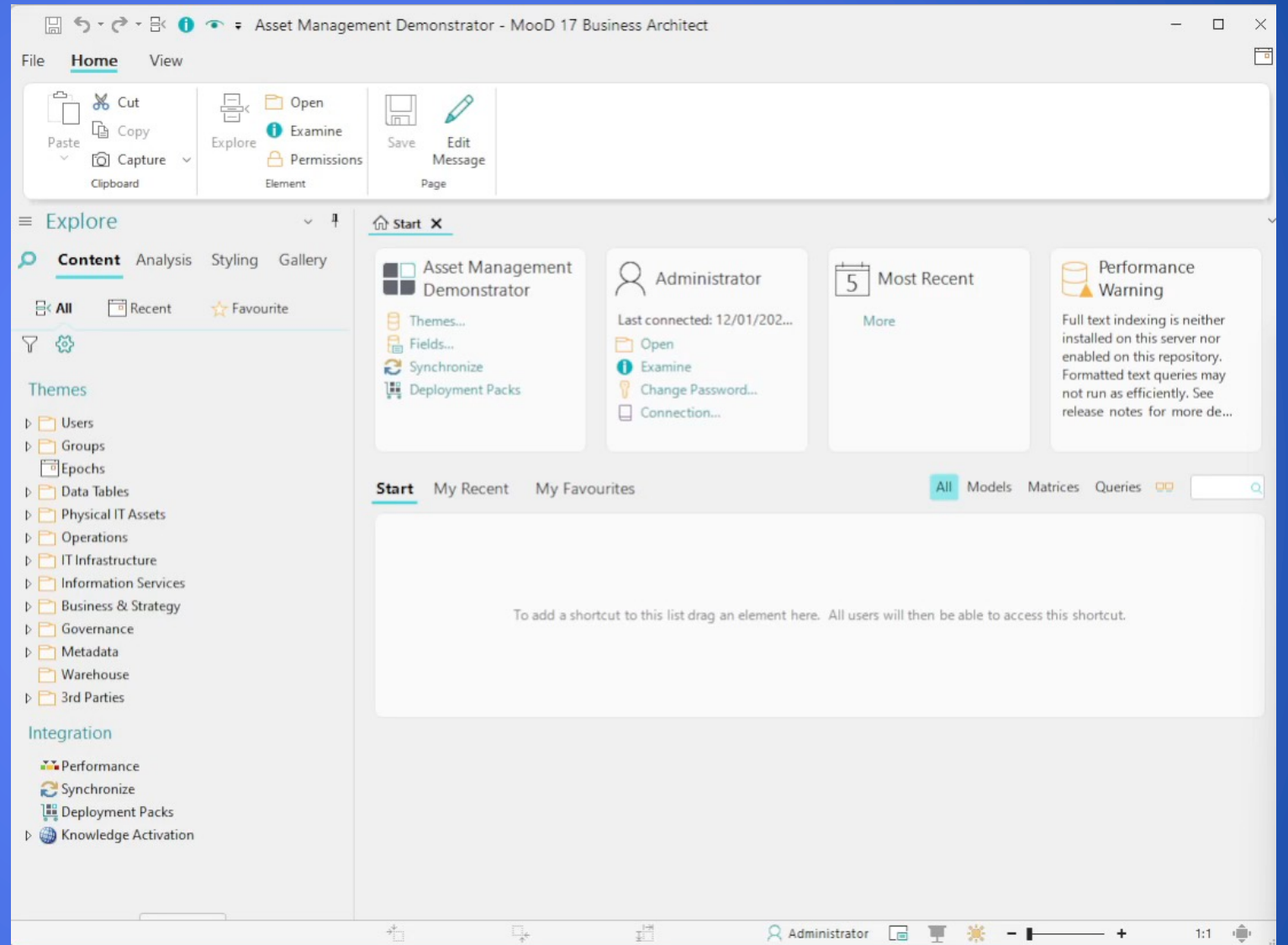
IOTICS Network hosted on Neutral Ground Server – i.e. Certified Cloud Environment

Data is stored on own environment.
Not in Data Access Layer

COOPERATIVE WORKING



COOPERATIVE WORKING



LIGHTWEIGHT CONNECTOR

```

moodimportipyb
Code Python 3 (ipykernel)

196 FE67E44BD71C4D91815540888C706F34 Sys003 Systems 5B06505D837C456A8AA8F5C5953BD85B did:iotics:iotGZb2u5qFE13hD3efRXP84mVTLvaKGVLF
197 0242EA2C20F34FD0962C0F5A703C6EBF Tablet 0000310 EUDs 66263A479A66448C80D686D2B3A0EE0F did:iotics:iotVrWwdUxB8Snj/WBWSvF81ZGQj9FXbPLAMS
198 7079EEBE7B3C44769880BD14C5E60BD3 Tablet 0000311 EUDs 66263A479A66448C80D686D2B3A0EE0F did:iotics:iotVrWwdUxB8Snj/WBWSvF81ZGQj9FXbPLAMS
199 5FB43D9175FE48C09444440311060E0C Tablet 0000312 EUDs 66263A479A66448C80D686D2B3A0EE0F did:iotics:iotVrWwdUxB8Snj/WBWSvF81ZGQj9FXbPLAMS
200 380F4F62913D47C9803556034B0F43E5 UK Location 25495377CFF4D4A8A8FC9B843136C8D did:iotics:iotR98tmhnbZau2L7bo1KA1Q5XLZ3Qs2MF

201 rows x 5 columns

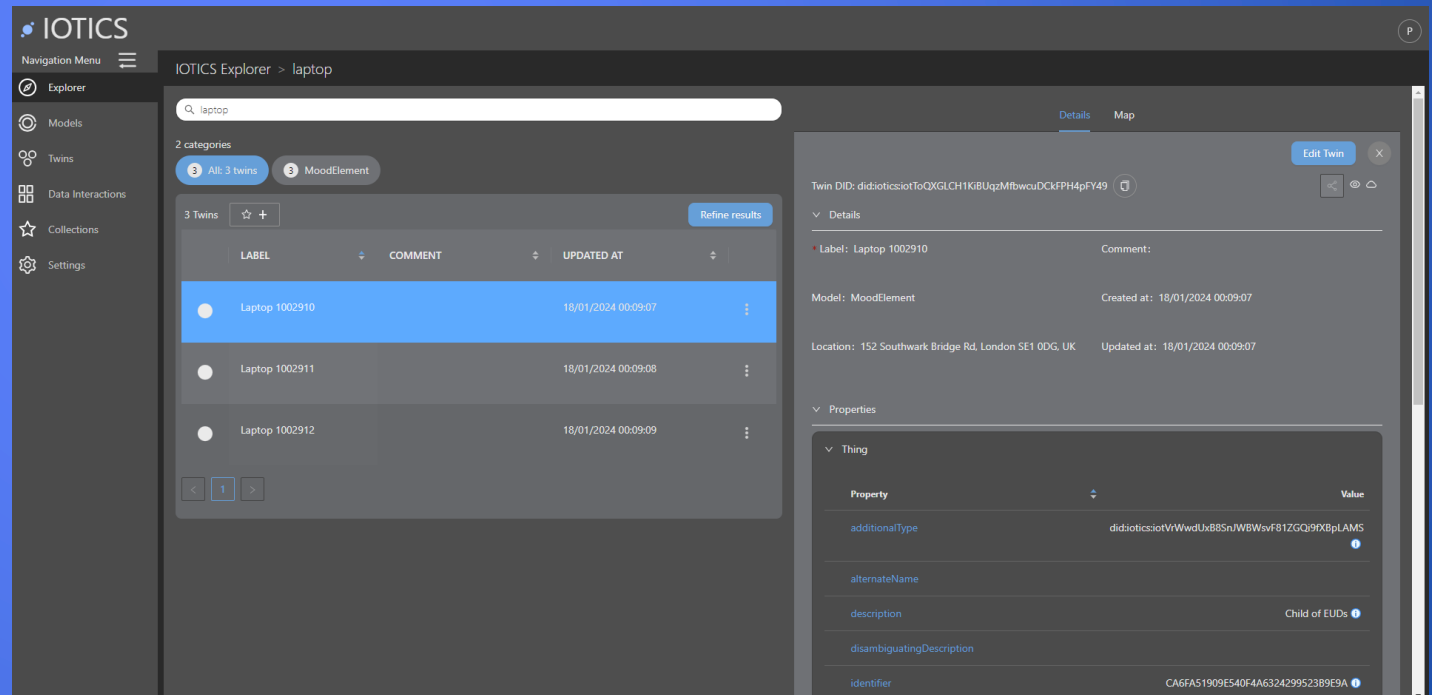
•[101]: identity_interface.refresh_token(
        user_identity=user_identity, agent_identity=agent_identity, token_duration=1000
    )
    iotics_api = IoticsApi(auth=identity_interface)

    elementsD = {}
    for index, row in df_elements_slim.iterrows():
        try:
            did = createElement(row['id'], row['name'], row['parentname'], row['parentdid'])
            elementsD[row['name']] = did
            s = "{} {} {} {} {} --> did {}".format(index, row['id'], row['name'], row['parentname'], row['parentdid'], did)
            print(s)
        except Exception as inst:
            s = "Exception -- {} {} {} {} {} --> did {}".format(index, row['id'], row['name'], row['parentname'], row['parentdid'], inst)
            print(s)

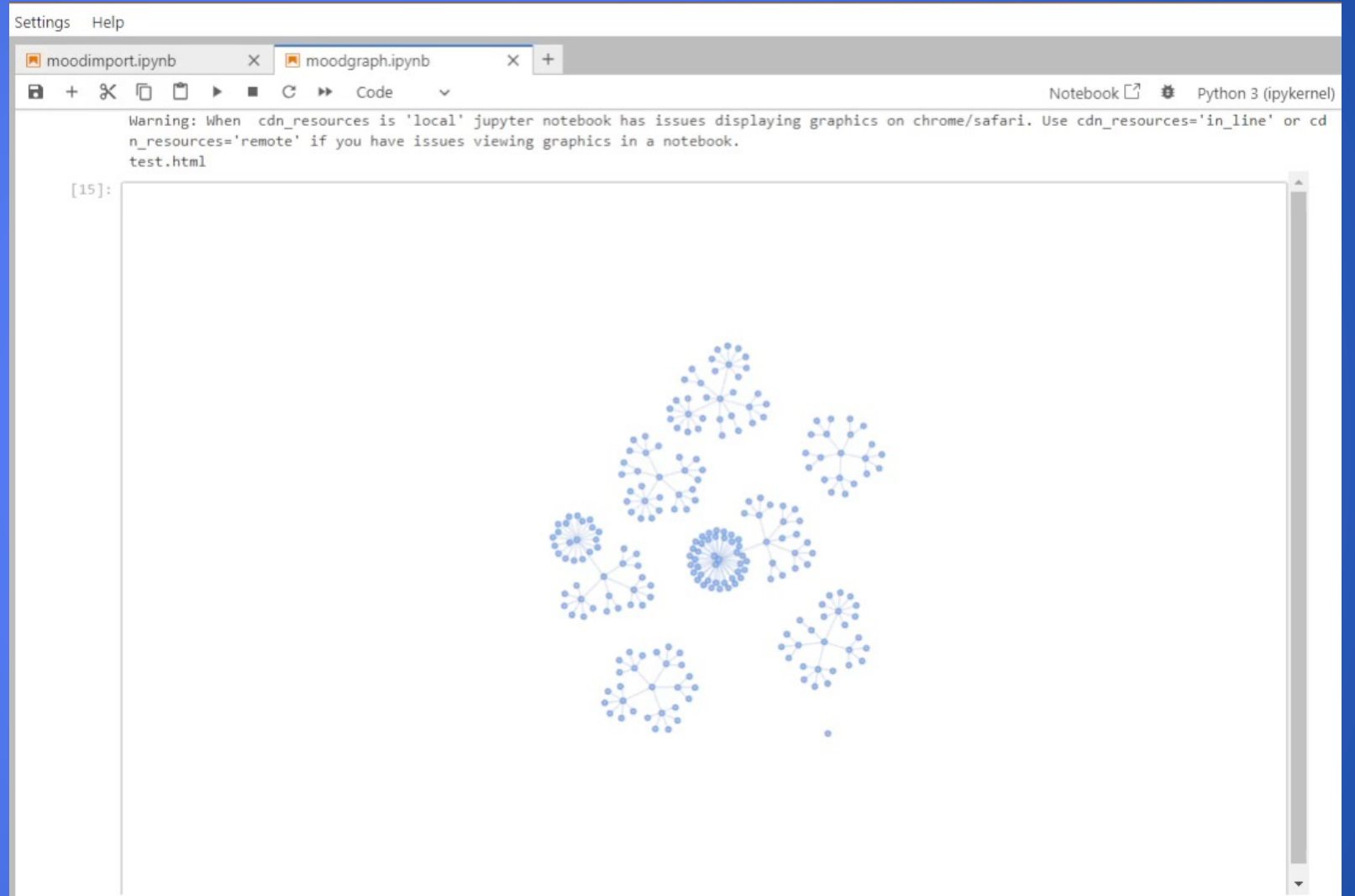
Twin did:iotics:iotYGLsfh1C17CJHV5oZ59aHwBkm8XzUFJqG created
0 C5C96ACE56148C89968EFA47FD3D8B7 API 1 Integration did:iotics:iotQm3zMeHbJ3HtwXV8XJNtZJQe05FZsTfAf --> did did:iotics:iotYGLsfh1C17CJHV5oZ59aHwBkm8XzUFJqG
Twin did:iotics:iotKDwC2xAS8k5RnMbb095Ux7HzYpAnYsjLL created
1 601C1EBA33324F3089891822D1EE0631 API 2 Integration did:iotics:iotQm3zMeHbJ3HtwXV8XJNtZJQe05FZsTfAf --> did did:iotics:iotKDwC2xAS8k5RnMbb095Ux7HzYpAnYsjLL
Twin did:iotics:iotBL2Ro898988iBw6gM6VCT3v3bUjzZiZNF created
2 4031E0855D0B947C699A7887EC0A54D0C API 3 Integration did:iotics:iotQm3zMeHbJ3HtwXV8XJNtZJQe05FZsTfAf --> did did:iotics:iotBL2Ro898988iBw6gM6VCT3v3bUjzZiZNF
Twin did:iotics:iotSikyWdN3HAVV3QksEfdbbubTpoZLh3DSv created
3 FD34392309CE498B9DEC57924AFCAC28 API 4 Integration did:iotics:iotQm3zMeHbJ3HtwXV8XJNtZJQe05FZsTfAf --> did did:iotics:iotSikyWdN3HAVV3QksEfdbbubTpoZLh3DSv
Twin did:iotics:iotXS7Bv5a8mc49RkqzrLFLABWtZxrHB2e92 created
4 086C54AAF5F4991B04F99E160380664 API 5 Integration did:iotics:iotQm3zMeHbJ3HtwXV8XJNtZJQe05FZsTfAf --> did did:iotics:iotXS7Bv5a8mc49RkqzrLFLABWtZxrHB2e92
Twin did:iotics:iotW7jnz0vPtUFUXvE3DfpVnF36RXCTHprX created
5 E7A446A5783045EEB74885F3B4C4822F API 6 Integration did:iotics:iotQm3zMeHbJ3HtwXV8XJNtZJQe05FZsTfAf --> did did:iotics:iotW7jnz0vPtUFUXvE3DfpVnF36RXCTHprX
Twin did:iotics:iotRh23DHxGwDmLnYAz6h3xw3RcTYXLgm6FU created
6 7C05992B39D648AF949356129D2029F9 API Gateway 1 Integration did:iotics:iotQm3zMeHbJ3HtwXV8XJNtZJQe05FZsTfAf --> did did:iotics:iotRh23DHxGwDmLnYAz6h3xw3RcTYXLgm6FU
Twin did:iotics:iotTFjuw3Cwdk3dr3YR65UVNRER2XQJ3qJ75 created
7 D9AA255C7EA94915ACF9CCFFBF95CDDF API Gateway 2 Integration did:iotics:iotQm3zMeHbJ3HtwXV8XJNtZJQe05FZsTfAf --> did did:iotics:iotTFjuw3Cwdk3dr3YR65UVNRER2XQJ3qJ75

```

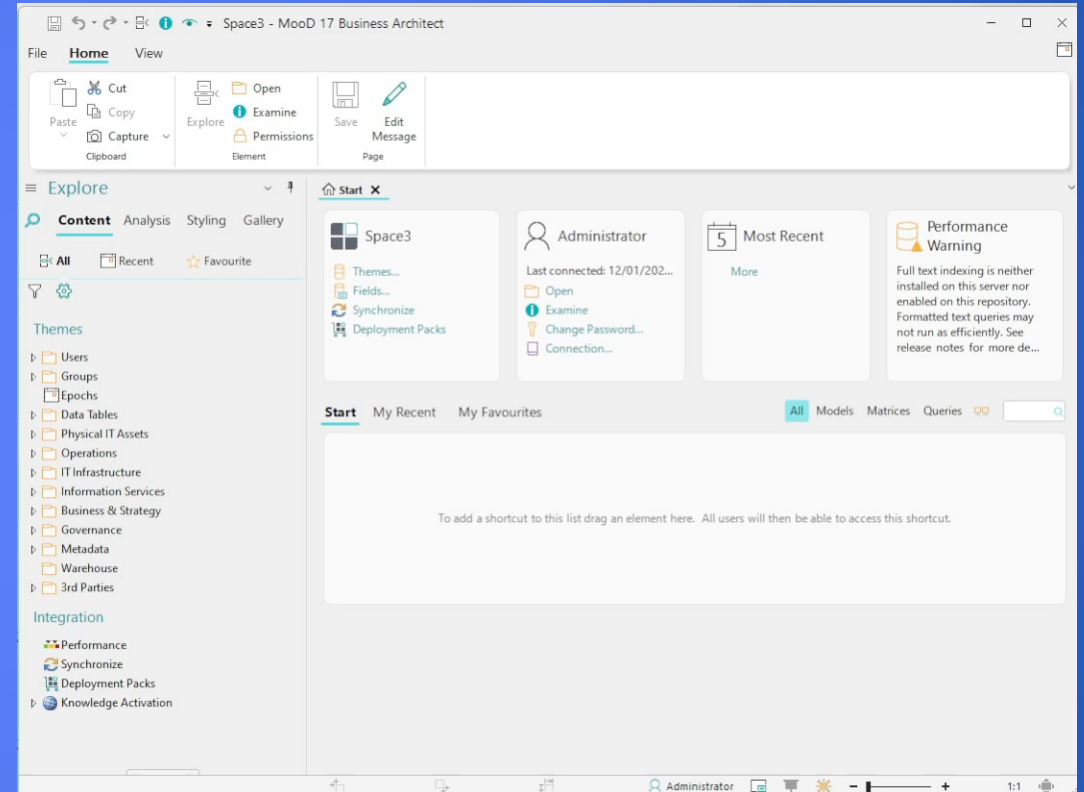
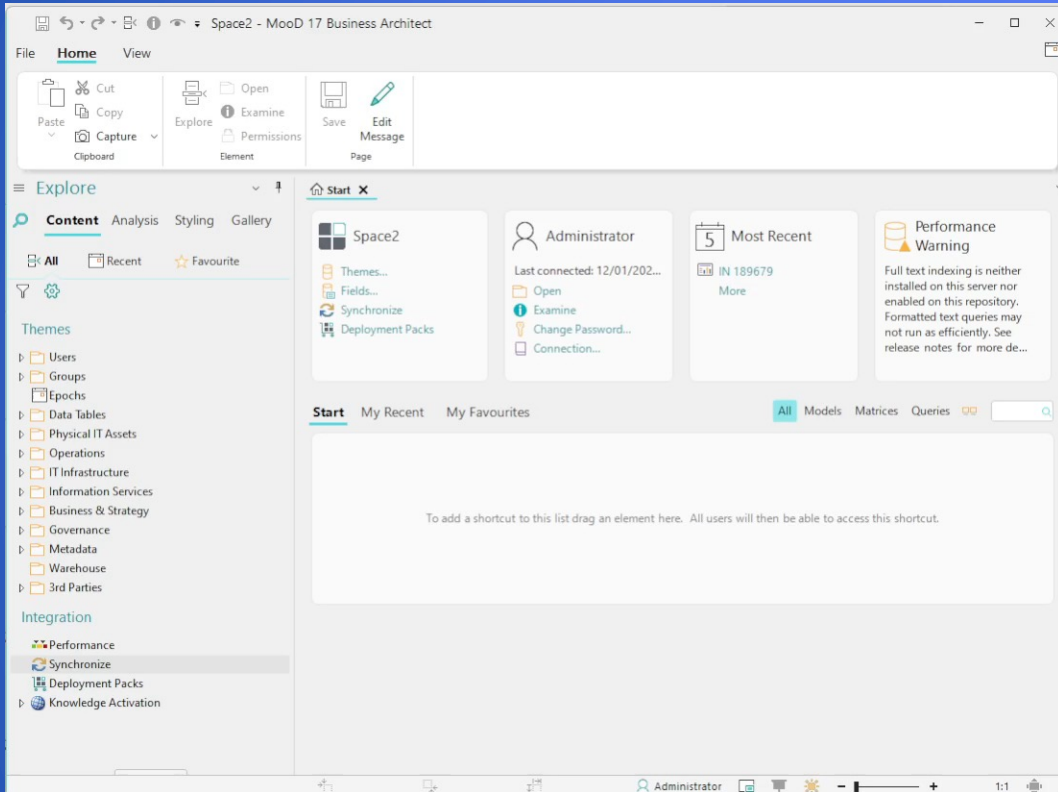
MBSE & IOTICSPACE

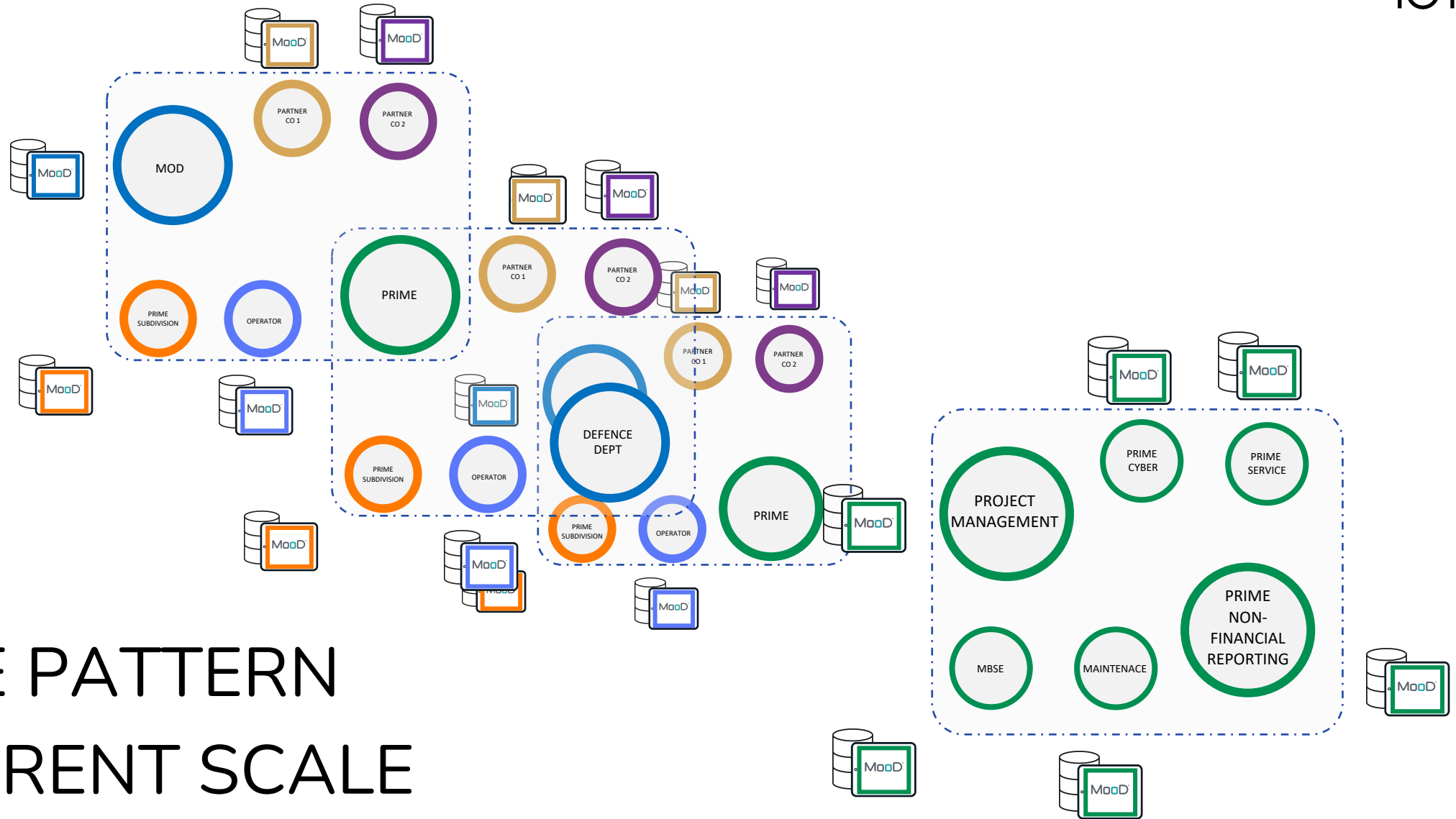


FEDERATED KNOWLEDGE GRAPH



FEDERATING INSTANCES





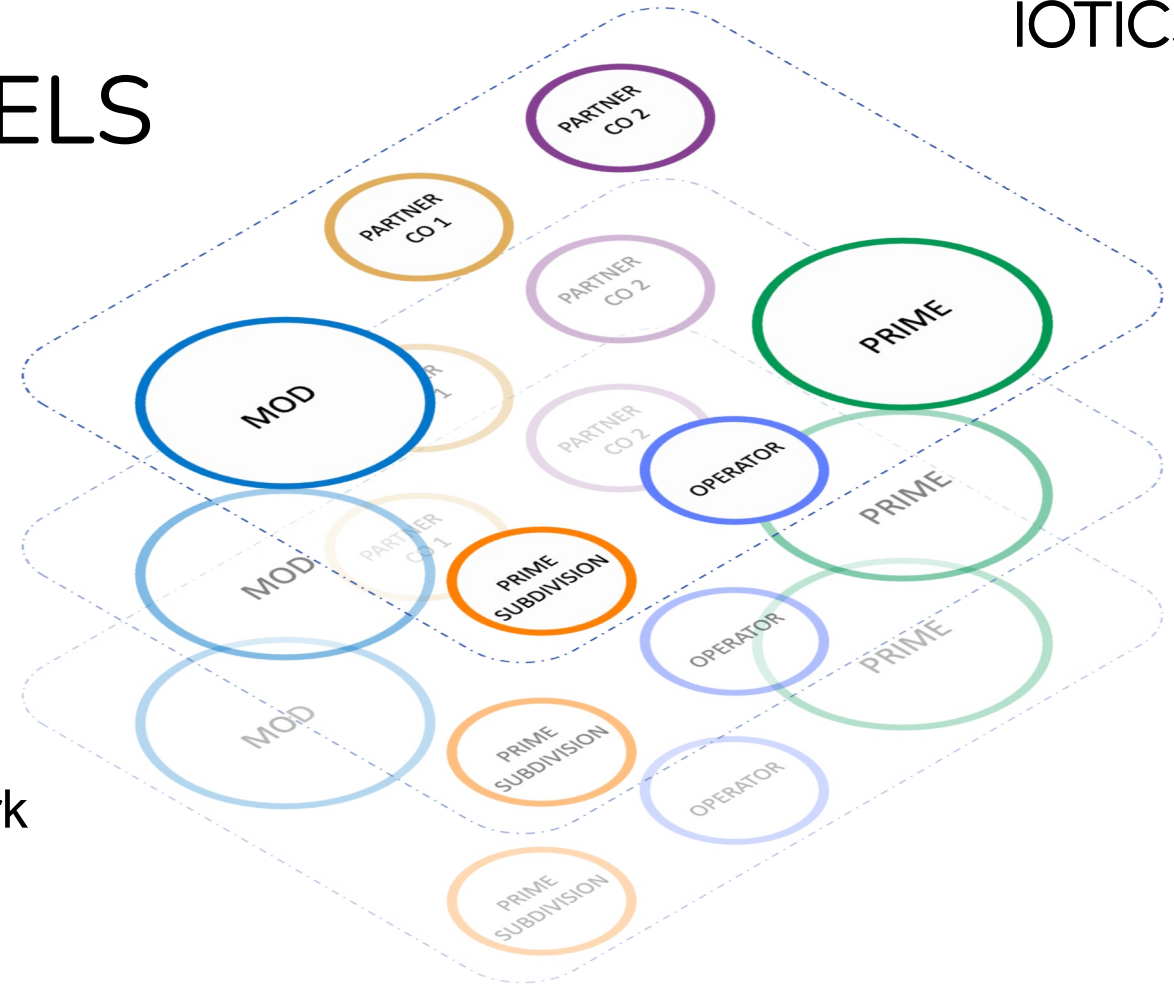
SAME PATTERN
DIFFERENT SCALE

FEDERATION AT ALL LEVELS

Trusted access in low trust ecosystems
(yes if vs. no because)

- Data reporting/compliance
- Asset-centric supply chain
- Ecosystem infrastructure

Foster cooperation and innovation across network while maintaining data security and privacy.



‘Every day, organizations deal with increasing amounts of data, originating from both inside and outside the organization. Due to centralized data ownership and data access, transparency and timeliness have become bottlenecks in many organizations.’

THANK YOU

Ali Nicholl
ali.nicholl@iotics.com

www.iotics.com

Listen to the
new episode of
the IOTICS
podcast here!





SERVICEKEY

TD-Info SME Showcase

Jordan Houston – Product Manager

Thursday, 25 January 2024

innovate.control.evolve.

33 About ServiceKey

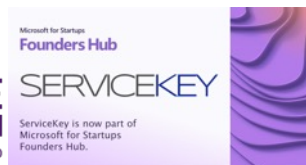
ServiceKey is founded on a vision of a future where businesses operate in a world of deep-rooted understanding of their customers' needs, a future where change is accepted as the norm and solutions adapt to meet ever changing demands as near to real time as possible, fully focused on sustainability and NetZero50.

Our Vision

To be the driving force behind next generation sustainable solutions.

Our Mission

By accelerating the way humanity understand, innovate and exploit opportunities.



innovate.control.evolve.

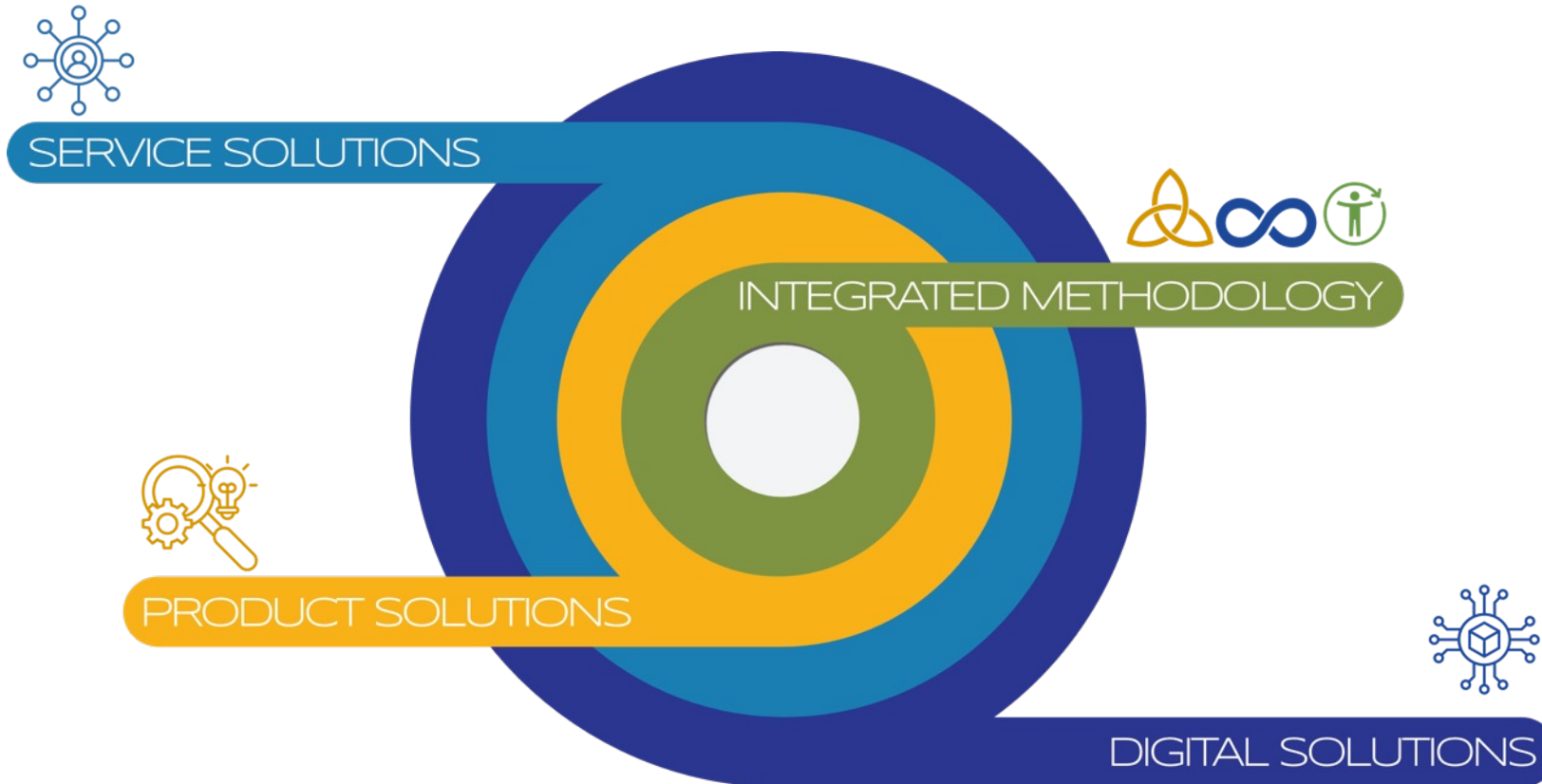
Thursday, 25 January 2024



34 What we do

ServiceKey offers a comprehensive approach designed to support businesses at various stages of their lifecycle, from early innovation to continuous improvement and effective change management.

Built on the foundational principle of an information-led strategy, this methodology offers a structured approach emphasising not just ideation and implementation of innovative solutions, but also a focus on monitoring and ensuring desired Customer Outcomes.



35 ServiceKey Integrated Methodologies



We believe that innovation is key to success. Perpetual Innovation helps you to identify new and creative ways to improve your products, services, and operations, and leverage the latest technologies and trends to your advantage. We help you think outside the box, challenge assumptions, and explore new opportunities for growth and development.



We understand that control is essential for the design and management of effective outcomes. Outcome Based Design provides the means to manage your resources, optimise your processes, and ensure compliance with regulations and standards, creating a perpetual environment for measurement and improvement allowing you to focus on fulfilling customer needs.



We recognise that evolution is an ongoing process, and that businesses must adapt and evolve to stay competitive and relevant. Using our objective data focussed approach our goal is to help you anticipate and respond to change, make effective and empowered decisions and to continuously improve and evolve your business for long-term success.

At ServiceKey we specialise in helping businesses and organisations innovate, control, and evolve. Our aim is to provide you with the expertise and guidance you need to overcome challenges, achieve your goals, and stay ahead of the curve in today's dynamic and competitive marketplace.

innovate.control.evolve.

Thursday, 25 January 2024

SERVICEKEY

36 Products

Rapid Understanding Assistant

This tool serves as a unifying force, consolidating an abundance of customer requirement information into a coherent and actionable summary.



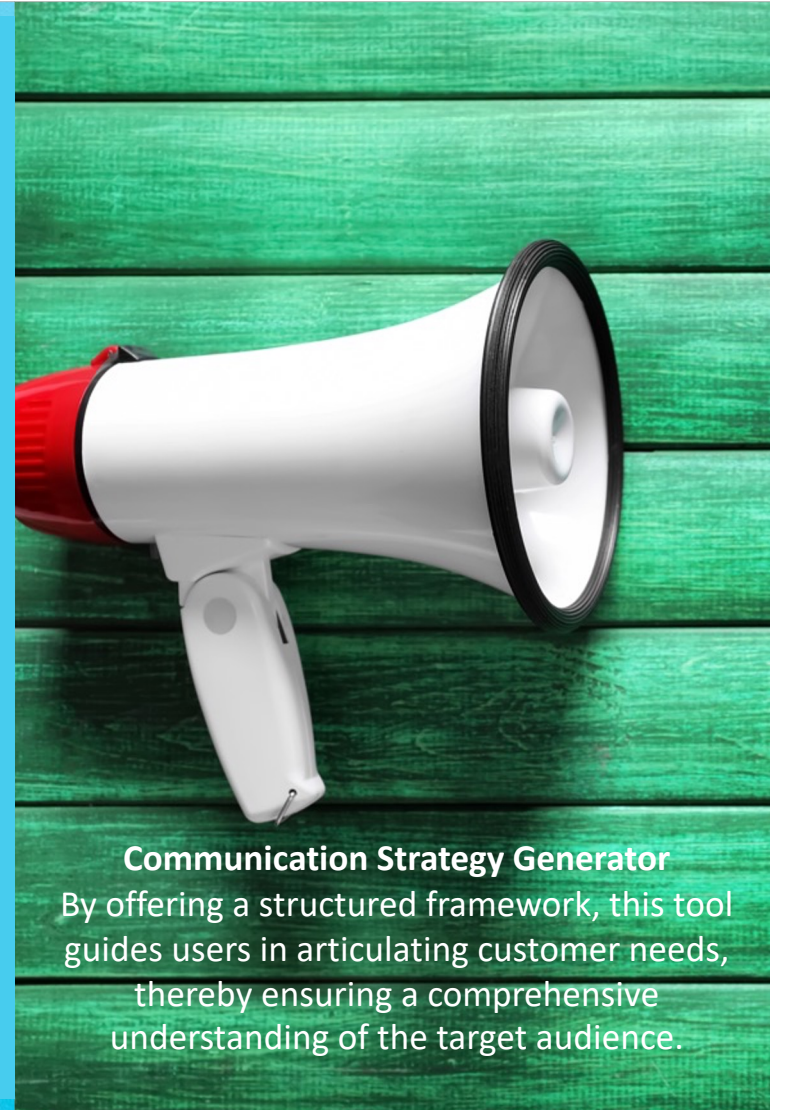
Solution Concept Development Tool

This pivotal component empowers users to navigate the complexities of solution creation by swiftly generating multiple innovative ideas.

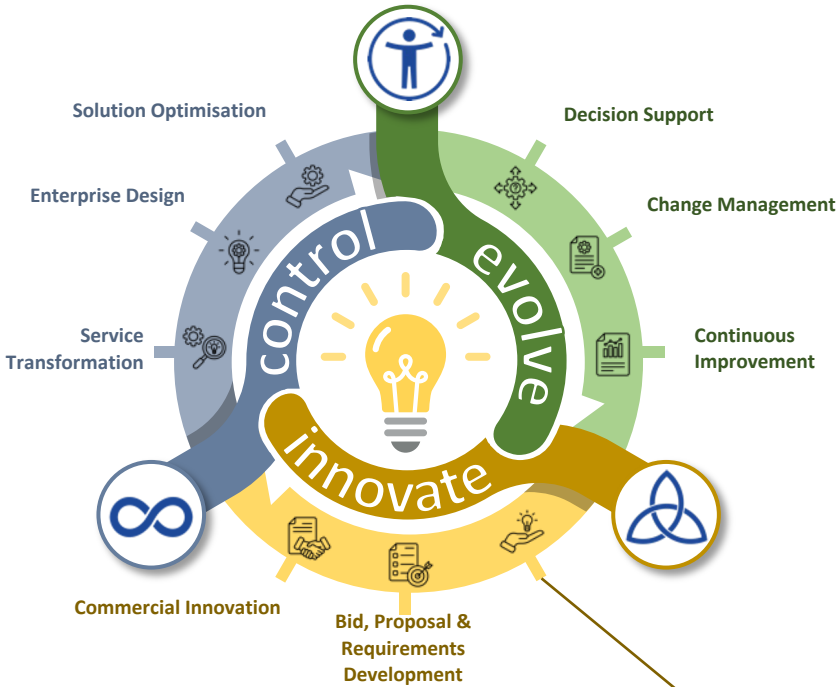


Communication Strategy Generator

By offering a structured framework, this tool guides users in articulating customer needs, thereby ensuring a comprehensive understanding of the target audience.



37 Services

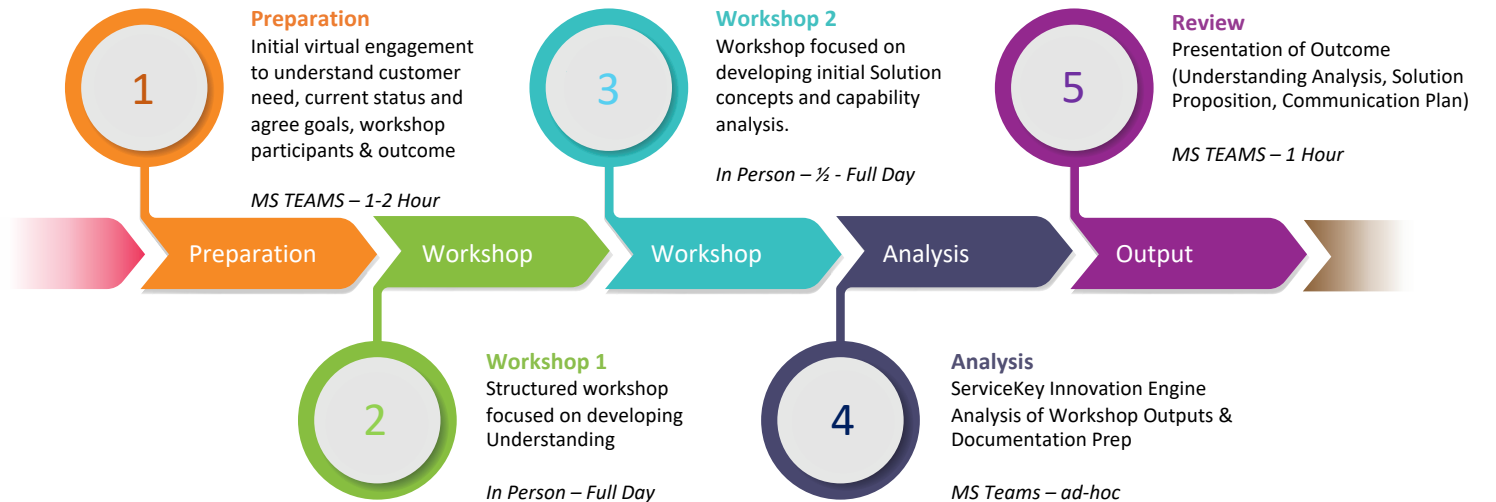


Concept Creation & Solution Design

Our team have experience developing solutions for some of the most complex defence projects. We can provide solution development guidance using our Perpetual Innovation including development of effective outcomes.

Perpetual Innovation® is designed to rapidly accelerate understanding to the point of solution creation, each step in the methodology is designed to mature both the understanding and the resulting solution, including communication methods. Each iteration of Perpetual Innovation® will provide a maturity assessment of the current position to inform future focus.

The ServiceKey Concept Creation & Solution Design service can be used as a precursor for any stage of solution design or transformation. In particular, it can provide the backbone for Bid & Proposal Development – facilitating early convergence of understanding, solution options and successful proposal documentation.



38 ServiceKey Digital Service Partner

ServiceKey Digital Solutions Service is a fusion of top-tier expertise and cutting-edge technology. By forging strategic partnerships with leading digital providers such as AWS, Microsoft, and Adobe, ServiceKey has positioned itself as a conduit to digital excellence.

This enables businesses to not only access innovative digital tools but also tap into a reservoir of collective expertise that these giants bring to the table, ensuring that every digital transformation journey is both seamless and impactful.

Modern Work:



Collaboration & Cloud:



Business Apps:



Security:



39 Current Customer Projects & Use Cases



SERVICEKEY

QUESTIONS?

Visit <https://servicekey.uk>
or contact us at hello@servicekey.uk
to find out more

SERVICEKEY

Find us at the DE&S
Digital Engineering
Conference
7th-8th February