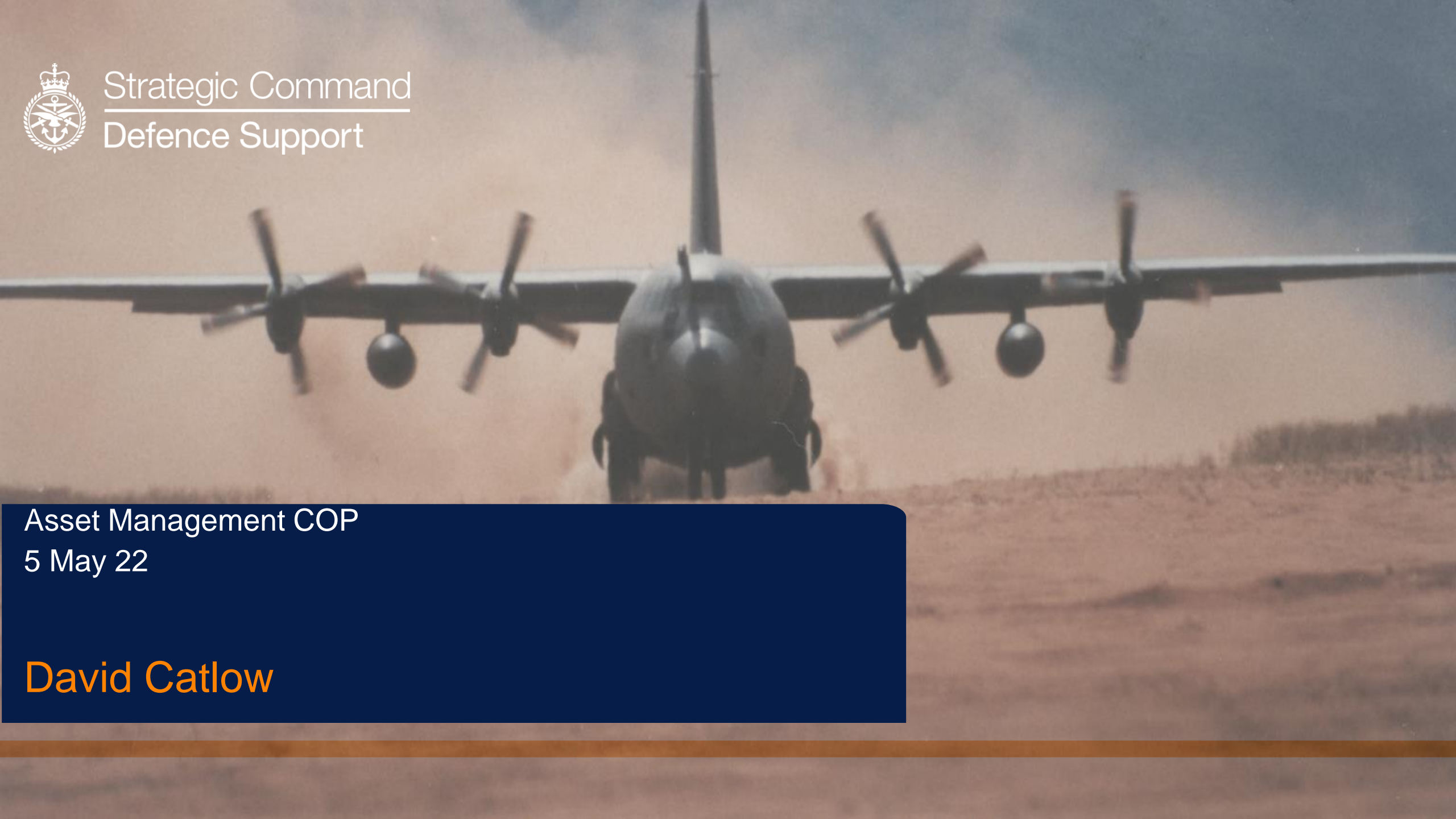




Strategic Command
Defence Support



Asset Management COP

5 May 22

David Catlow

What is Engineering Support Transformation (EST)?

EST will trial technologies that can improve the way the MoD strategically manages its assets throughout their lifecycle.

Problem Statement

There is **inconsistent application of engineering support** across the Defence Support business leading to **inefficient solutions** in managing our assets and supporting our equipment.

Technological opportunities to improve legacy support arrangements in engineering support are **slow to be adopted**, which in turn affects the support solutions developed for new platforms.

Proposed Solution

EST will look to maximise the principles of **Strategic Asset Management** practice (from other sectors and other parts of Defence) to provide more effective decision making, leading to more efficient outcomes for the Support enterprise as a whole.

Approach

EST will employ new technologies to test solutions and enable the identification of best practice approach across engineering support, **including but not limited to:**



Engineering Support Policies and Standards



Digital Twins



Digital Tools improvement plan



Fleet & Portfolio Management



Condition Based Maintenance (CBM) and Health and Usage Monitoring Systems (HUMS)



Commercial Partnerships and Models

EST and Asset Management

What we've done and where we're going with Asset Management...



Hypothesis- Discovery report (19/20) highlighted the need for transformation activity across the Engineering Support Environment. The Outline Business Case (OBC) was approved in May 2021, **releasing funding**.



Further Assessment and the delivery of three accelerator projects refined the approach and thinking and highlighted **the criticality** (and the maturity) of Strategic Asset Management across Support.



Asset Management Implementation MoD will write the Eng Sp Asset Management Implementation Plan (a hybrid of White Paper and a Strategy) by Sep 22. Collaboration with DE&S, FLCs, SDA and Industry (through TDI) will be vital to inform.

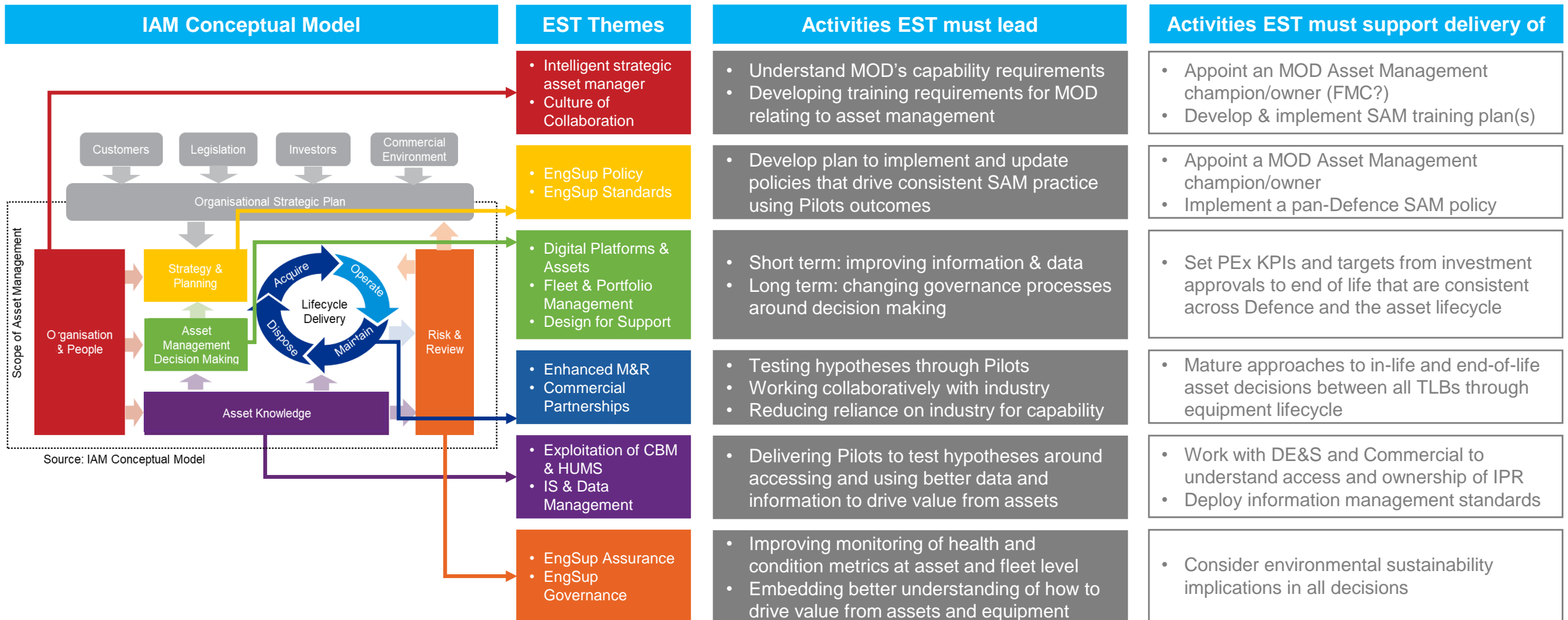


Roll-out, once we have decided on 'the how,' we will need to maintain momentum and coherence and implement at pace. This will be coordinated through the **EST Campaign Plan**.



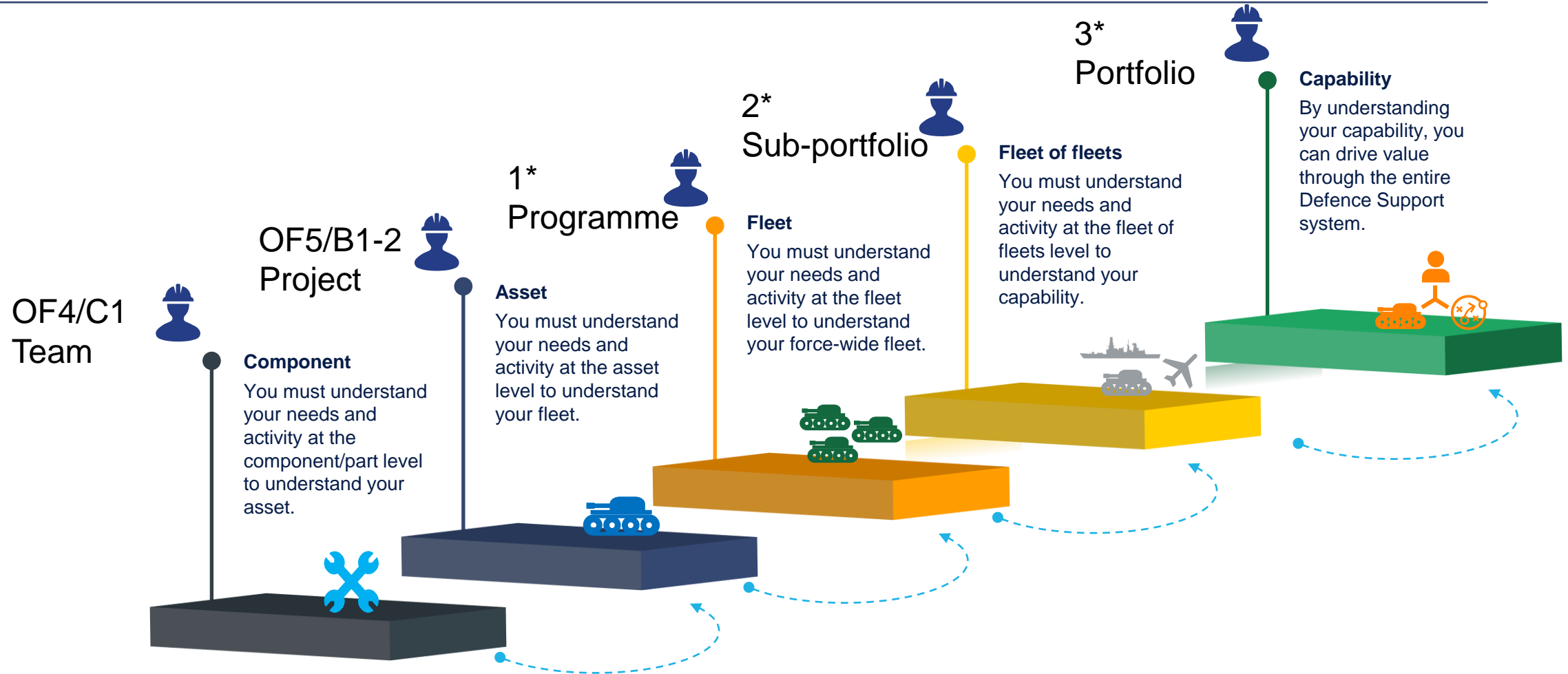
How is SAM being delivered through EST?

The use of the IAM model allows us to consider the framework of the implementation plan that will deliver SAM principles across the Defence engineering Support enterprise.



Approach to Pilots

.Investing in pilots at the component/platform level will give the **evidence** to understand the organisational level at which technologies provide most value to the enterprise



Next Steps

